

2023 annual report to the Community

# South Port Primary School

Respect, Resilience and Empathy



South Port Primary School number: 1207

Partnership: River Hub



School principal:

Nicola Garner

 Signature

Date of endorsement:

19/02/2024



Government  
of South Australia  
Department for Education

# Context Statement

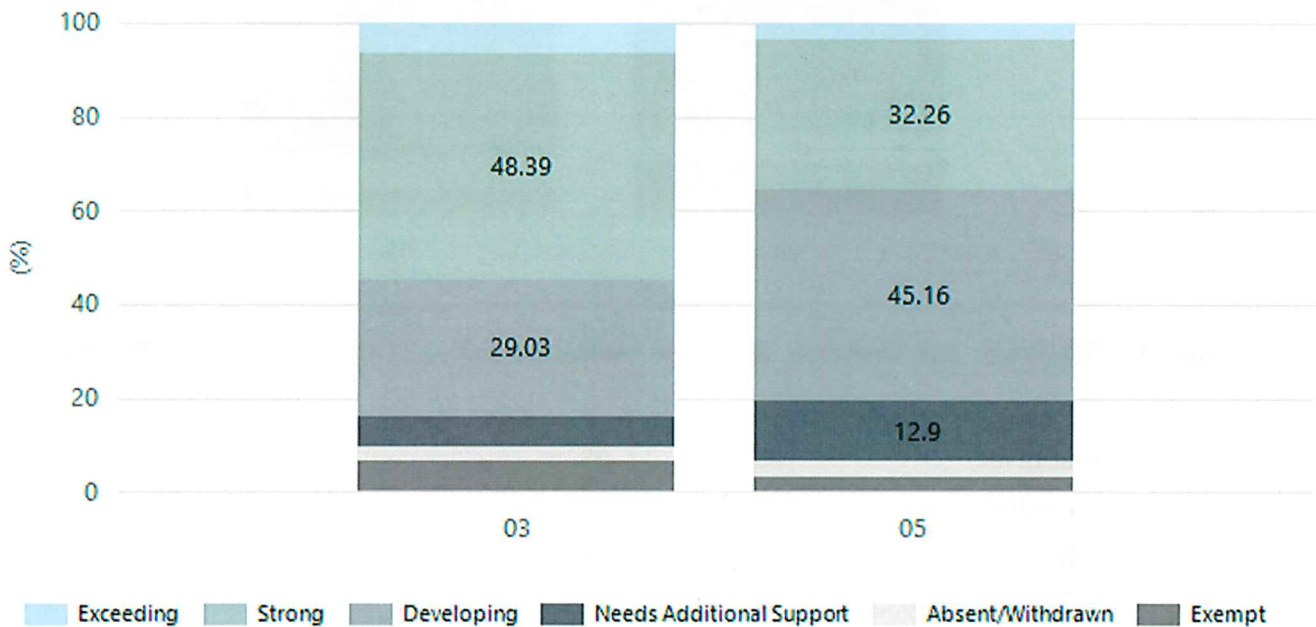
South Port Primary School caters for students from R-6. At the time of this report, the enrolment in 2023 is 271. South Port Primary School is classified as Category 5 on the Department for Education Index of Educational Disadvantage. At the time of this report, the school population includes 6% Aboriginal students, 13% students with disabilities, 1% students with English as an additional language or dialect (EALD) funded background, 4% children/young people in care. Further information about the school is available on the school's website (including its context statement), as well as the My School website.

## Performance Summary

### NAPLAN Proficiency

In 2023, the Australian Curriculum, Assessment and Reporting Authority (ACARA) - a Commonwealth Independent statutory authority - announced changes to NAPLAN performance reporting. This new way of reporting by ACARA that NAPLAN results from 2023 will not be comparable to previous years. The new approach replaces the previous numerical NAPLAN bands and the national minimum standard.

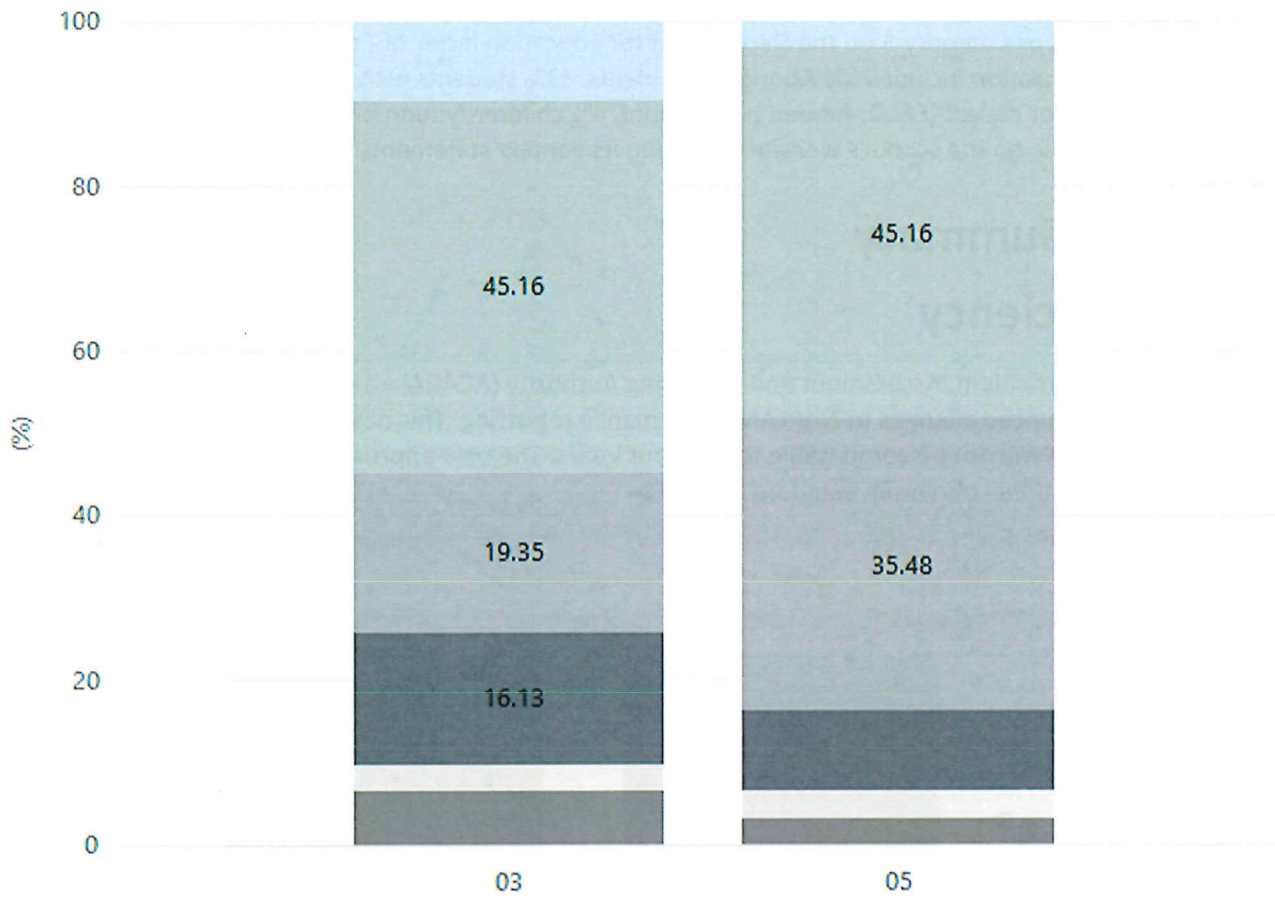
#### Numeracy



Year Level	03	05
Exceeding	2	1
Strong	15	10
Developing	9	14
Needs Additional Support	2	4
Absent/Withdrawn	1	1
Exempt	2	1
Total	31	31

Data Source: Department for Education Assessment Data Holdings, 2023. When there are less than six students in a cohort, no data is supplied.

## Reading

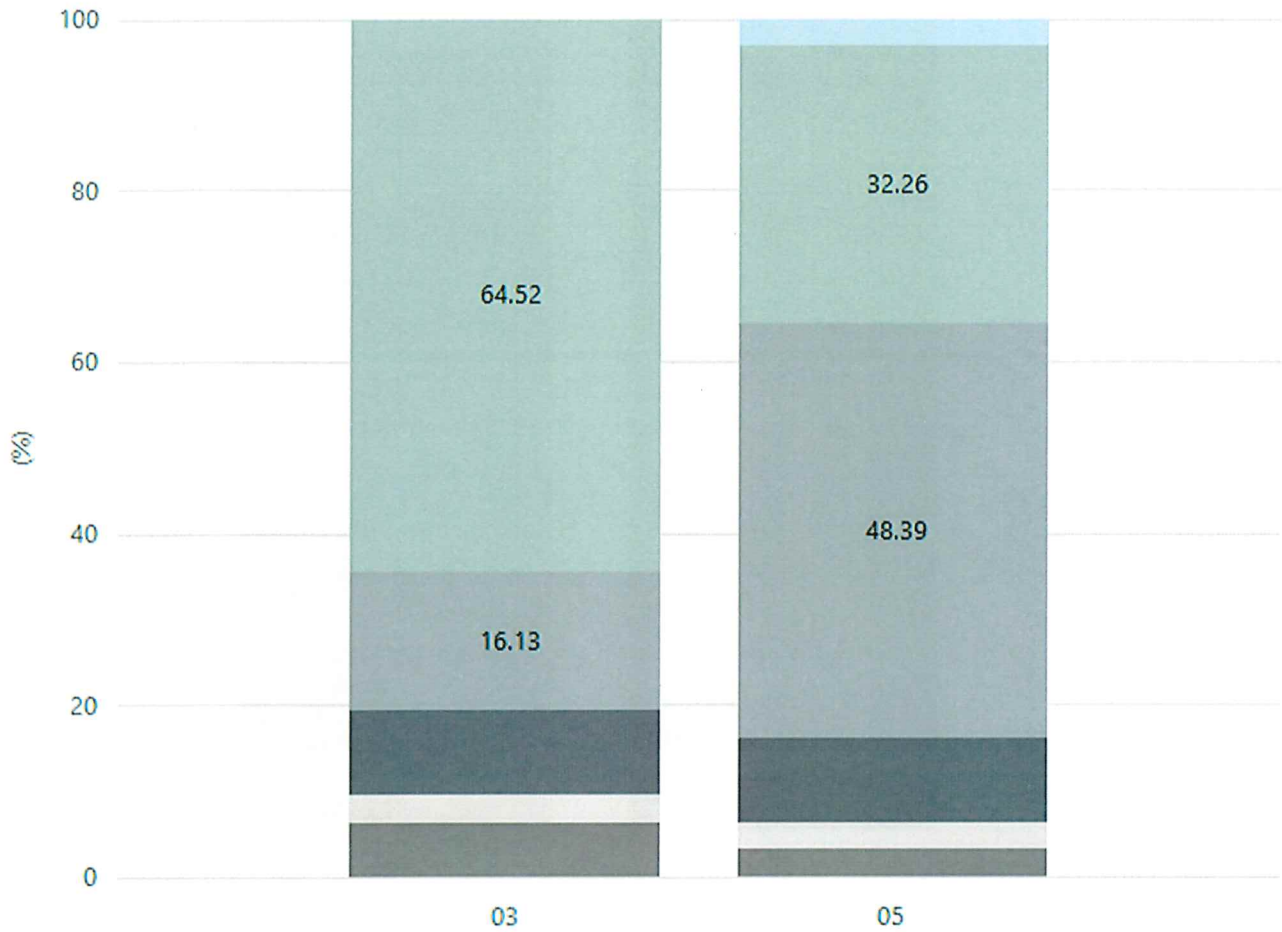


■ Exceeding 
 ■ Strong 
 ■ Developing 
 ■ Needs Additional Support 
 ■ Absent/Withdrawn 
 ■ Exempt

Year Level	03	05
Exceeding	3	1
Strong	14	14
Developing	6	11
Needs Additional Support	5	3
Absent/Withdrawn	1	1
Exempt	2	1
<b>Total</b>	<b>31</b>	<b>31</b>

Data Source: Department for Education Assessment Data Holdings, 2023. When there are less than six students in a cohort, no data is supplied.

## Writing

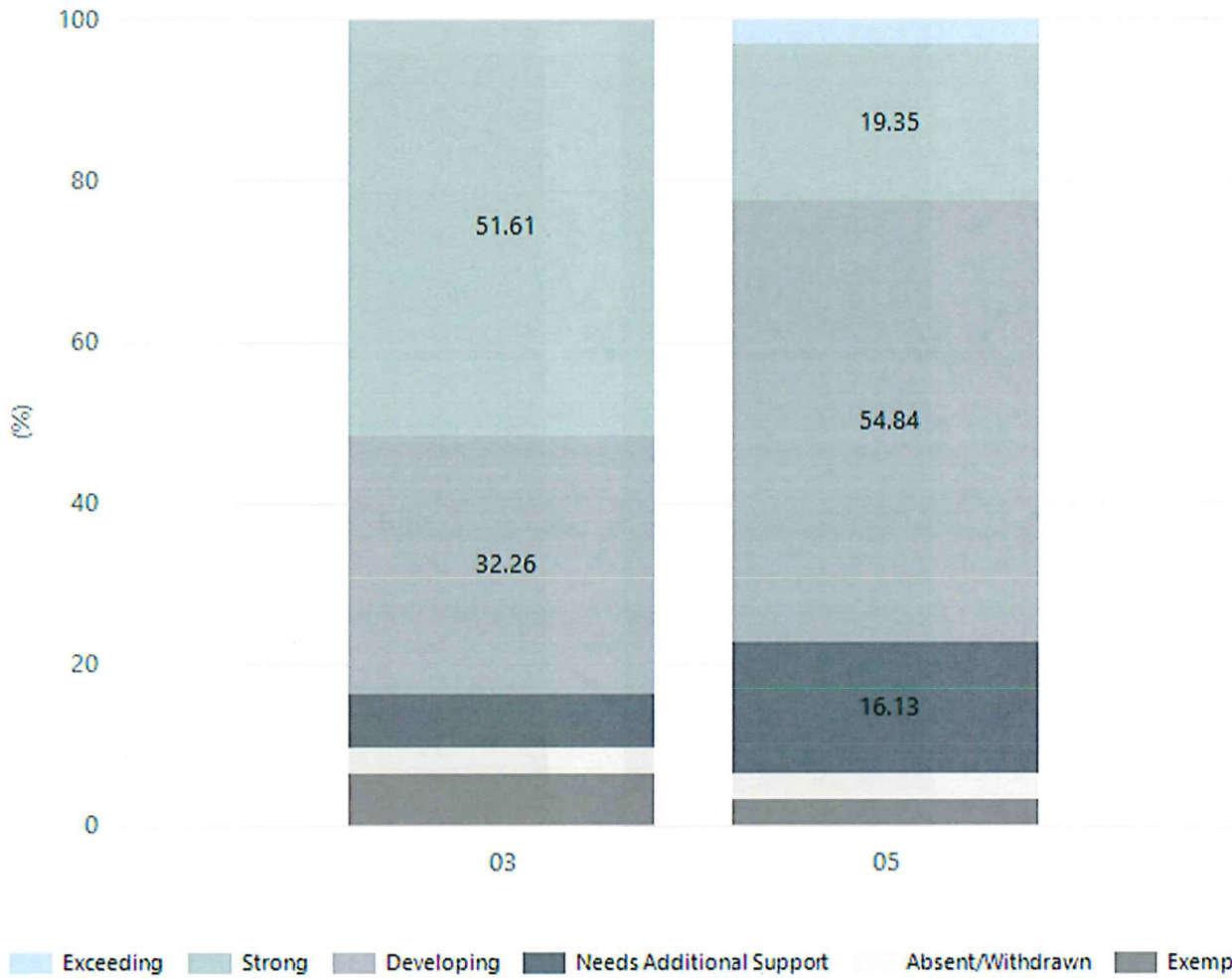


Exceeding Strong Developing Needs Additional Support Absent/Withdrawn Exempt

Year Level	03	05
Exceeding		1
Strong	20	10
Developing	5	15
Needs Additional Support	3	3
Absent/Withdrawn	1	1
Exempt	2	1
Total	31	31

Data Source: Department for Education Assessment Data Holdings, 2023. When there are less than six students in a cohort, no data is supplied.

## Grammar

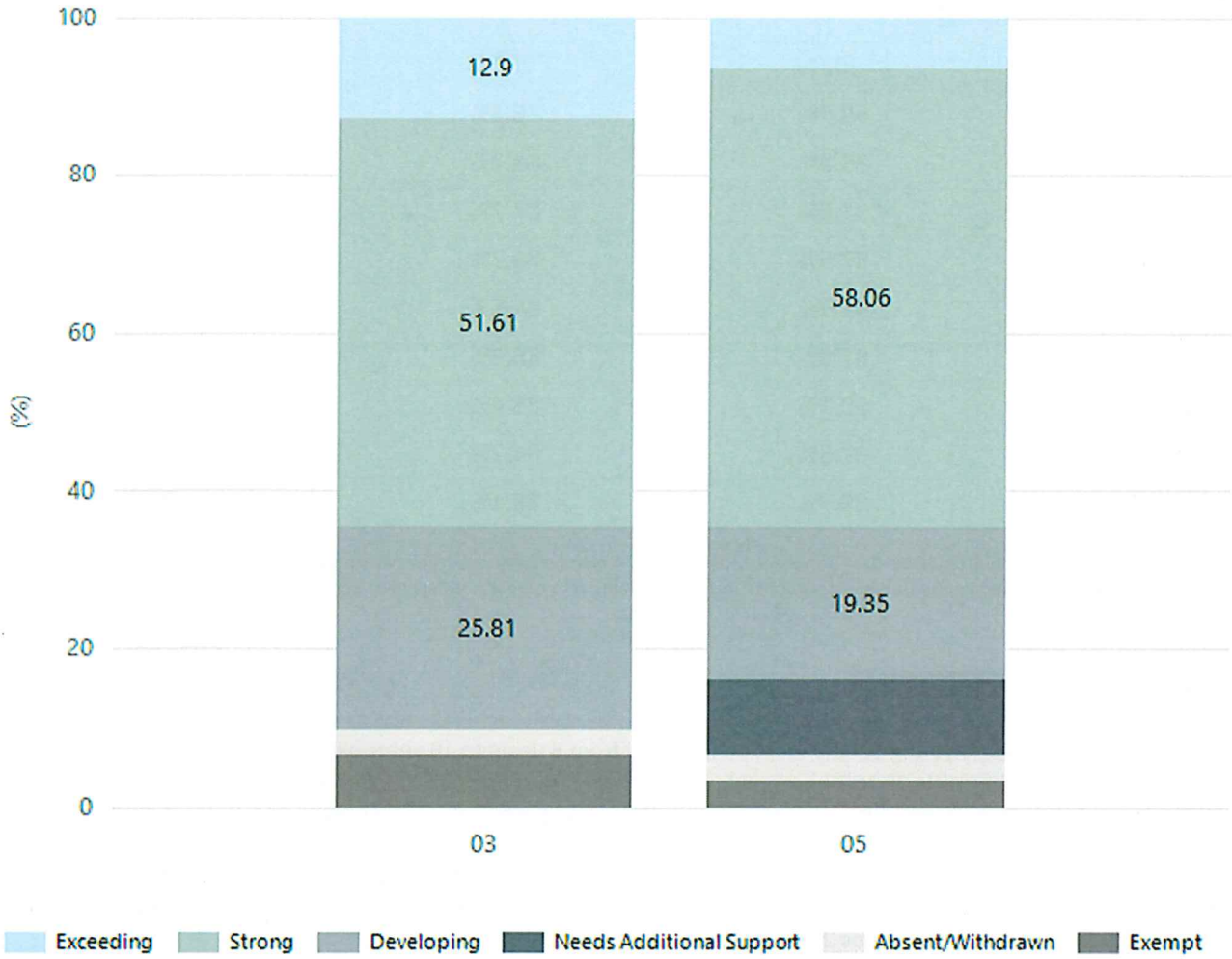


Year Level	03	05
Exceeding		1
Strong	16	6
Developing	10	17
Needs Additional Support	2	5
Absent/Withdrawn	1	1
Exempt	2	1
Total	31	31

Data Source: Department for Education Assessment Data Holdings, 2023. When there are less than six students in a cohort, no data is supplied.



# Spelling



Year Level	03	05
Exceeding	4	2
Strong	16	18
Developing	8	6
Needs Additional Support		3
Absent/Withdrawn	1	1
Exempt	2	1
Total	31	31

Data Source: Department for Education Assessment Data Holdings, 2023. When there are less than six students in a cohort, no data is supplied.

# School Attendance

Year Level	2021	2022	2023
Reception	90.7%	86.2%	82.0%
Year 01	89.5%	88.2%	86.8%
Year 02	91.6%	87.7%	85.2%
Year 03	87.5%	85.2%	87.4%
Year 04	91.7%	84.5%	89.5%
Year 05	87.9%	86.3%	85.8%
Year 06	90.1%	85.4%	87.1%
Primary Other	87.8%	84.7%	80.8%
Total	89.7%	86.1%	85.9%

Data Source: Department for Education Attendance Data, Semester 1 Report 2023. A blank cell indicates there were no students enrolled. 'Primary Other' includes students enrolled in specialised education options. 'Secondary Other' includes students who have already spent a year at Year 12 and elected to undertake further study at Year 12.

## Attendance Comment

In South Australia, all children and young people must be in school from 6 years to 16 years old. They must attend a government or non-government school full time. From age 16 to 17 however, young people must attend school or an approved learning program (such as an apprenticeship, traineeship, accredited course or university). Schools and parents must encourage and support students to come to school every day. Parents and caregivers must make sure their child is enrolled in a school, and attends school all day and everyday it is open, unless a child is sick or has an approved exemption. Teachers and leaders actively follow up when a student misses school, including recording all absences and non-attendance. All schools in South Australia have local attendance procedures governed under the Education and Children's Services Regulations 2020.

## Governing Council Report 2023

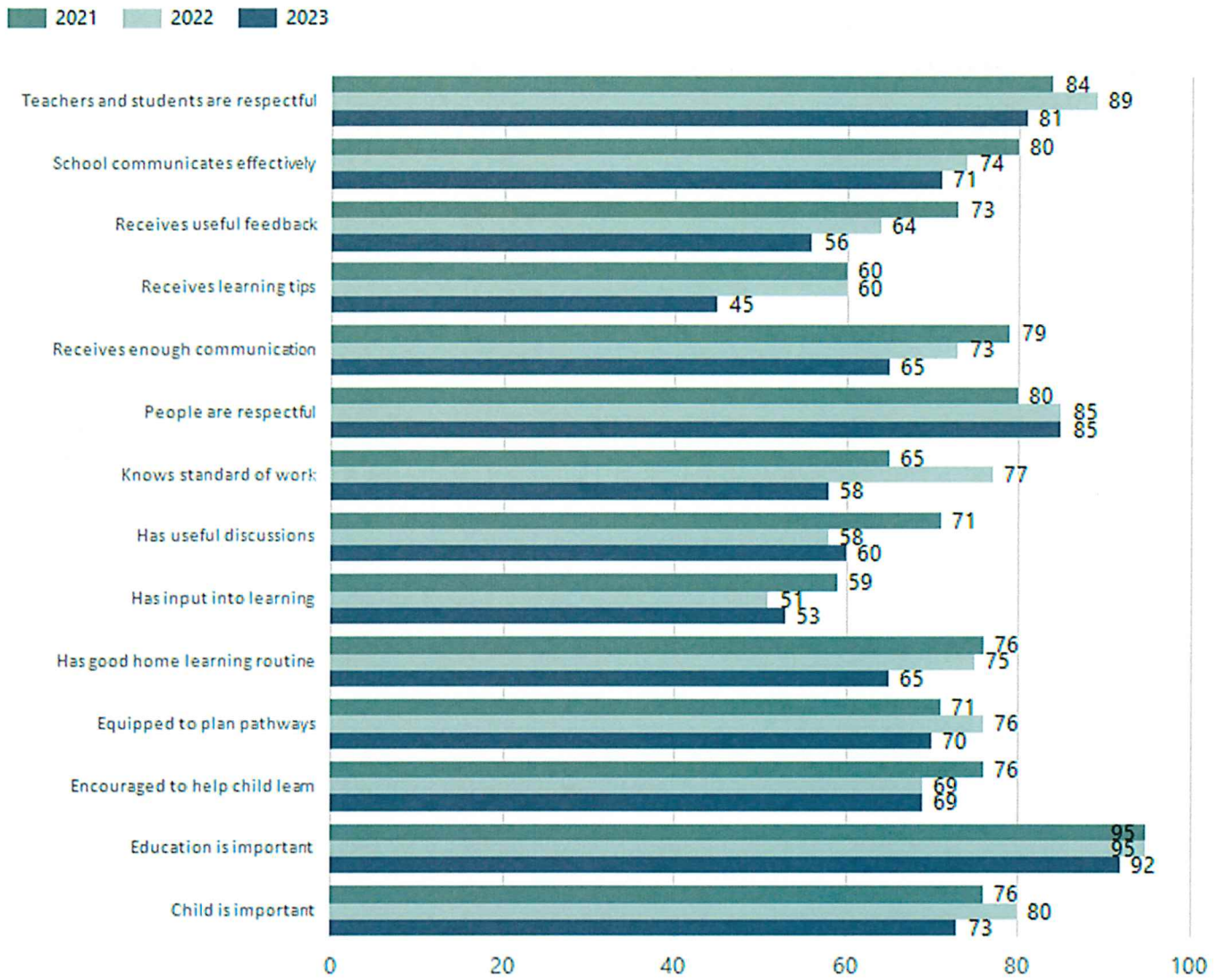
This year it has been really good to see the community start to come together again. Our Governing Council numbers have been steady and the people on council are keen to work together and make progress in other areas such as fundraising. The fundraising group have organised: a very successful school disco, Mother and Fathers' Day Stalls, and also ensuring that Sports Day had fundraising options such as a BBQ and cake stall. The Christmas Market has been a great addition to the calendar and there are plans to grow this event in the future.

Members of the governing council have supported school excursions and that has been greatly appreciated by the teachers and students without this support the excursions wouldn't happen. Excursions have been well attended by families and the numbers attending assemblies are on the rise.

Coffee mornings are now twice a week and more people are attending these. Trevor Piper has (Chair) has rallied the community by asking for support from Bakers Delight, Woolworths and other local businesses. These connections have been excellent and provided the school community with food. The bread and fruit has been used in our daily Lunchtime Club and it's been good to see the children share food and try new things. For Trevor's contribution to our community he has been awarded two volunteer awards by our local MPs. The basketball court was resurfaced at start of the year and this has been used well by the older students. Our outside sheltered area has improved with a new large, oval shelter and a smaller seated area near the Junior Primary play equipment.

# Parent Opinion Survey Results

Proportion of agree/strongly agree response(%)



Data Source: 2023 Department for Education Parent Opinions Survey, Term 3 2023.



## Intended Destination

Leave Reason	Number	%
NG - ATTENDING NON-GOV SCHOOL IN SA	4	27.0%
TG - TRANSFERRED TO SA GOVERNMENT SCHOOL	11	73.0%

Data Source: Department for Education Destination Data Report, 2023. Data extract term 3 2023. Data shows recorded destinations for students that left the school in the previous year. Data is uploaded by schools in term 3 and may not reflect final or total figures at time of report creation.

# Highest Qualifications held by the teaching workforce and workforce composition

All teachers at this school are qualified and registered with the SA Teachers Registration Board.

Qualification Level	Number of Qualifications
Bachelor's degrees or Diplomas	15
Postgraduate Qualifications	7

Data Source: Data extracted from Mandatory Workforce Information Collections as on the last pay date of June 2023. As self-reported by staff in the system.

Please note: Data includes staff who are Actively employed and on extended paid leave. Please note only the highest qualification of the Teaching staff is reported. Excludes any number of other certifications earned.

## Workforce composition including indigenous staff

	Teaching Staff		Non-Teaching Staff	
	Indigenous	Non-Indigenous	Indigenous	Non-Indigenous
Full-Time Equivalents	0.6	19.2	0.5	9.5
Persons	1.0	21.0	1.0	14.0

Data Source: Data extracted from Mandatory Workforce Information Collection as on the last pay date of June 2023.

Please note: Data includes staff who are actively employed and on extended paid leave. "Indigenous category" is self-reported by staff in the system.

## Financial Statement

Funding Source	Amount
Grants: State	\$3,691,549.00
Grants: Commonwealth	\$8,400.00
Parent Contributions	\$56,475.00
Fund Raising	\$18,873.00
Other	\$10,000.00

Data Source: School supplied data.